

△			
△			
△			
△			
NO.	DATE	REVISION	REFERENCE DWG
1			

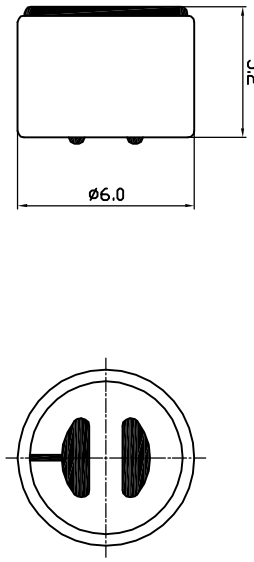
1	2	3	4
---	---	---	---

TOLERANCES UNLESS NOTED OTHERWISE		DRAWN		KEPO MODEL NO.		CUSTOMER	
.X ±		DESIGN		KPCM-6B		CUSTOMER NO.	
.XX ±		CHECKED		DWG NO.		VER	I:1
.XXX ±		APPROVED				UNIT	SCALE
90° FORMED +2°		DATE	05.06.27			mm	SHEET
ANGLES -1°		CONTRACT NO.					
		AGENCY APPROVAL					

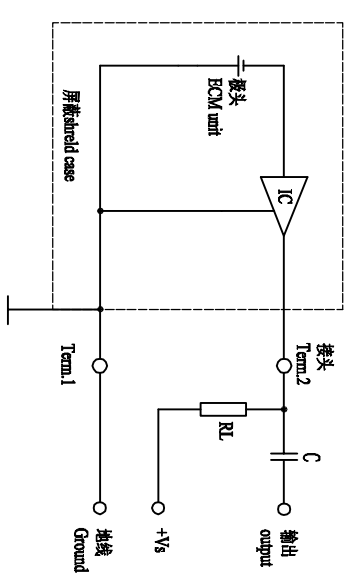
KEPO CO., LTD. TEL: (+86)574-88370330 FAX: (+86)574-88370329

编号 NO.	项目 Items	规格 Specifications
1	额定电压 Rated Voltage	2V
2	工作电压 Operating Voltage	1.5V~10V
3	灵敏度 Sensitivity	-58± 2dB at 1KHz(0dB=1V/μ bar)
4	消耗电流 Current Consumption	0.5mA Max
5	频率范围 Frequency	100~16,000Hz
6	信噪比 S/N Ratio	≥ 60dB
7	灵敏度减低 Sensitivity Reduction	within -3dB at 1.5V
8	方向性 Directivity	Omnidirectional
9	测试条件 Testing Condition	1000Hz, Vs=2V, RL=2.2K Ω
10	壳体材料/颜色 Shell Material/Color	Al/Silver
11	工作温度 Operating Temperature	-25~+55 °C
12	贮存温度 Store Temperature	-25~+55 °C
13	重量 Weight	0.8g

备注 Note:



原理图



壳体field case

接头 RCM unit

接头 Term2

输出 output

+Vs

电阻 RL

电容 C

地线 Ground

Term1

Ground

IC

壳体field case

接头 RCM unit

接头 Term2

输出 output

+Vs

电阻 RL

电容 C

地线 Ground

Term1

Ground

IC

壳体field case

接头 RCM unit

接头 Term2

输出 output

+Vs

电阻 RL

电容 C

地线 Ground

Term1

Ground

IC

壳体field case

接头 RCM unit

接头 Term2

输出 output

+Vs

电阻 RL

电容 C

地线 Ground

Term1

Ground

IC

壳体field case

接头 RCM unit

接头 Term2

输出 output

+Vs

电阻 RL

电容 C

地线 Ground

Term1

Ground

IC

壳体field case

接头 RCM unit

接头 Term2

输出 output

+Vs

电阻 RL

电容 C

地线 Ground

Term1

Ground

IC

壳体field case

接头 RCM unit

接头 Term2

输出 output

+Vs

电阻 RL

电容 C

地线 Ground

Term1

Ground

IC

壳体field case